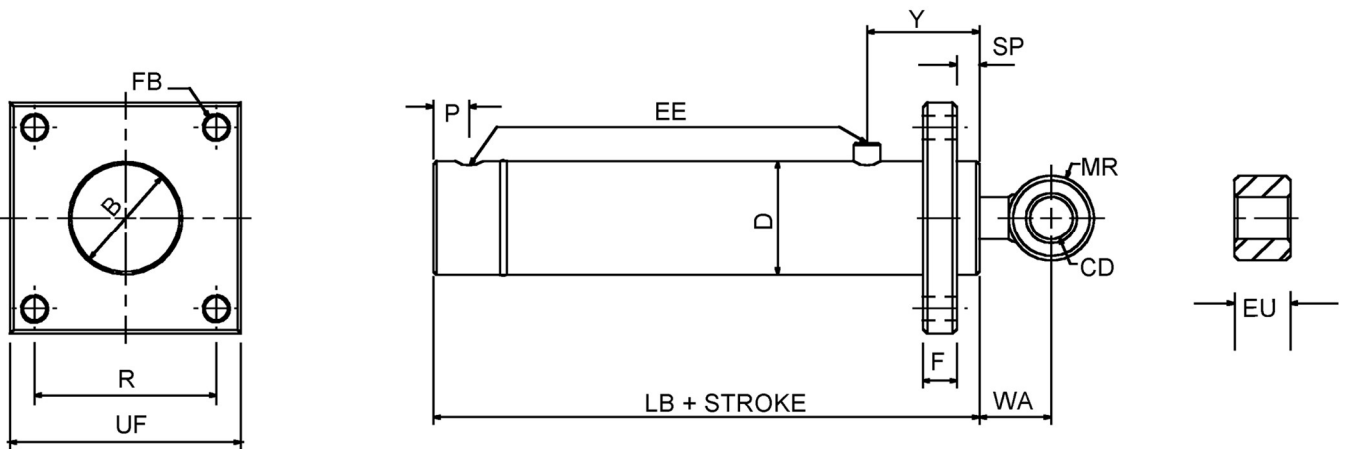


SQUARE FLANGE

Standard 210 Bar Series



CYL BORE	ROD DIA	CD (H11)	D	EE bsp	EU	R	UF	F max	FB	LB	MR max	P	Y	WA	SP
1.00"	0.50"	12.70	38	G1/4	16	65	82	12	7	94	12.5	13	32	25	8
	19														
1.25"	0.62"	15.88	44.5	G1/4	19	71	90	12	9	102	16	13	40	28	10
	25														
1.50"	0.75"	19.05	51	G3/8	25	85	108	16	11	131	20	15	50	32	10
	32														
2.00"	1.00"	22.23	63.5	G3/8	32	105	130	16	13.5	148	22	15	60	38	10
	1.25"				38										
	1.50"				45										
2.50"	1.25"	25.40	76.2	G1/2	38	115	145	20	13.5	169	25	20	75	43	12
	1.50"				45										
	1.75"				50										
3.00"	1.50"	31.75	88.9	G1/2	45	130	165	20	17.5	184	32	20	85	52	13
	1.75"				50										
3.25"	2.00"	38.10	95.3	G1/2	57	145	185	25	17.5	184	38	20	85	60	13
	1.75"				50										
	2.25"				63.5										
3.50"	1.75"	38.10	101.6	G1/2	50	150	193	25	22	189	38	20	90	60	14
	2.00"				57										
	2.25"				63.5										
4.00"	2.00"	44.45	114.3	G3/4	57	160	200	32	22	204	45	26	95	70	15
	2.25"				63.5										
	2.50"				76.2										
	3.00"				90										
4.50"	2.00"	44.45	130	G3/4	57	180	225	32	22	219	45	26	100	70	15
	2.25"				63.5										
	2.50"				76.2										
	3.00"				90										
5.00"	2.50"	50.80	146	G3/4	76.2	200	250	40	26	239	51	26	115	81	15
	3.00"				90										
	3.50"				102										
6.00"	3.00"	63.50	171.5	G3/4	90	235	290	50	29	260	60	26	136	95	16
	4.00"				115										
7.00"	3.50"	76.20	203.2	G1	102	265	330	50	32	293	70	34	155	108	19
	4.00"				115										
8.00"	4.00"	76.20	228.6	G1	115	300	370	65	38	318	75	34	180	115	19
	5.00"				150										