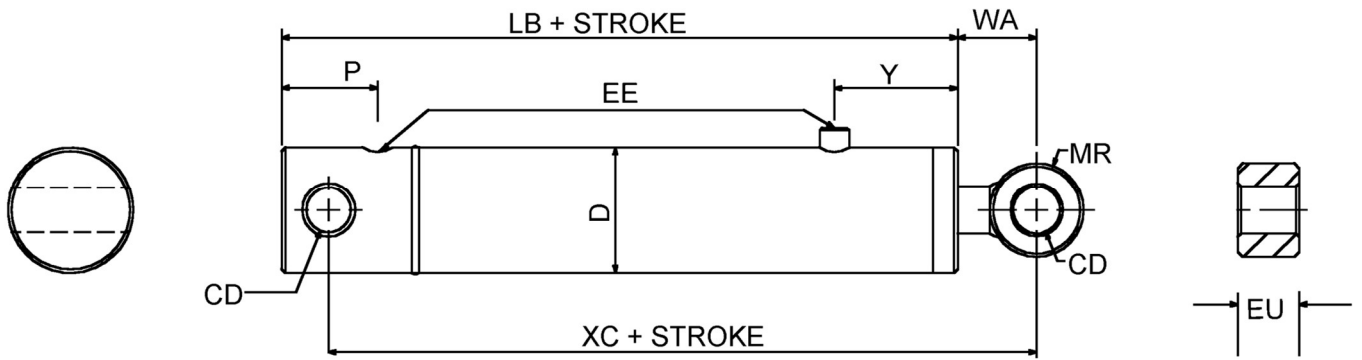


SLUG BASE

Standard 210 Bar Series



CYL BORE	ROD DIA	CD (H11)	D	EE bspp	EU	LB	MR max	P	Y	WA	XC
1.00"	0.50"	12.70	38	G1/4	16	111	12.5	30	32	25	124
	0.62"				19						
1.25"	0.62"	15.88	44.5	G1/4	19	125	16	36	40	28	137
	0.75"				25						
1.50"	0.75"	19.05	51	G3/8	25	158	20	42	50	32	172
	1.00"				32						
2.00"	1.00"	22.23	63.5	G3/8	32	181	22	48	60	38	197
	1.25"				38						
	1.50"				45						
2.50"	1.25"	25.40	76.2	G1/2	38	205	25	56	75	43	223
	1.50"				45						
	1.75"				50						
3.00"	1.50"	31.75	88.9	G1/2	45	226	32	62	85	52	249
	1.75"				50						
	2.00"				57						
3.25"	1.75"	38.10	95.3	G1/2	50	234	38	70	85	60	260
	2.00"				57						
	2.25"				63.5						
3.50"	1.75"	38.10	101.6	G1/2	50	242	38	73	90	60	266
	2.00"				57						
	2.25"				63.5						
4.00"	2.00"	44.45	114.3	G3/4	57	263	45	85	95	70	293
	2.25"				63.5						
	2.50"				76.2						
	3.00"				90						
4.50"	2.00"	44.45	130	G3/4	57	282	45	89	100	70	308
	2.25"				63.5						
	2.50"				76.2						
	3.00"				90						
5.00"	2.50"	50.80	146	G3/4	76.2	311	51	98	115	81	342
	3.00"				90						
	3.50"				102						
6.00"	3.00"	63.50	171.5	G3/4	90	346	60	112	136	95	382
	4.00"				115						
7.00"	3.50"	76.20	203.2	G1	102	393	70	134	155	108	433
	4.00"				115						
8.00"	4.00"	76.20	228.6	G1	115	424	75	140	180	115	467
	5.00"				150						